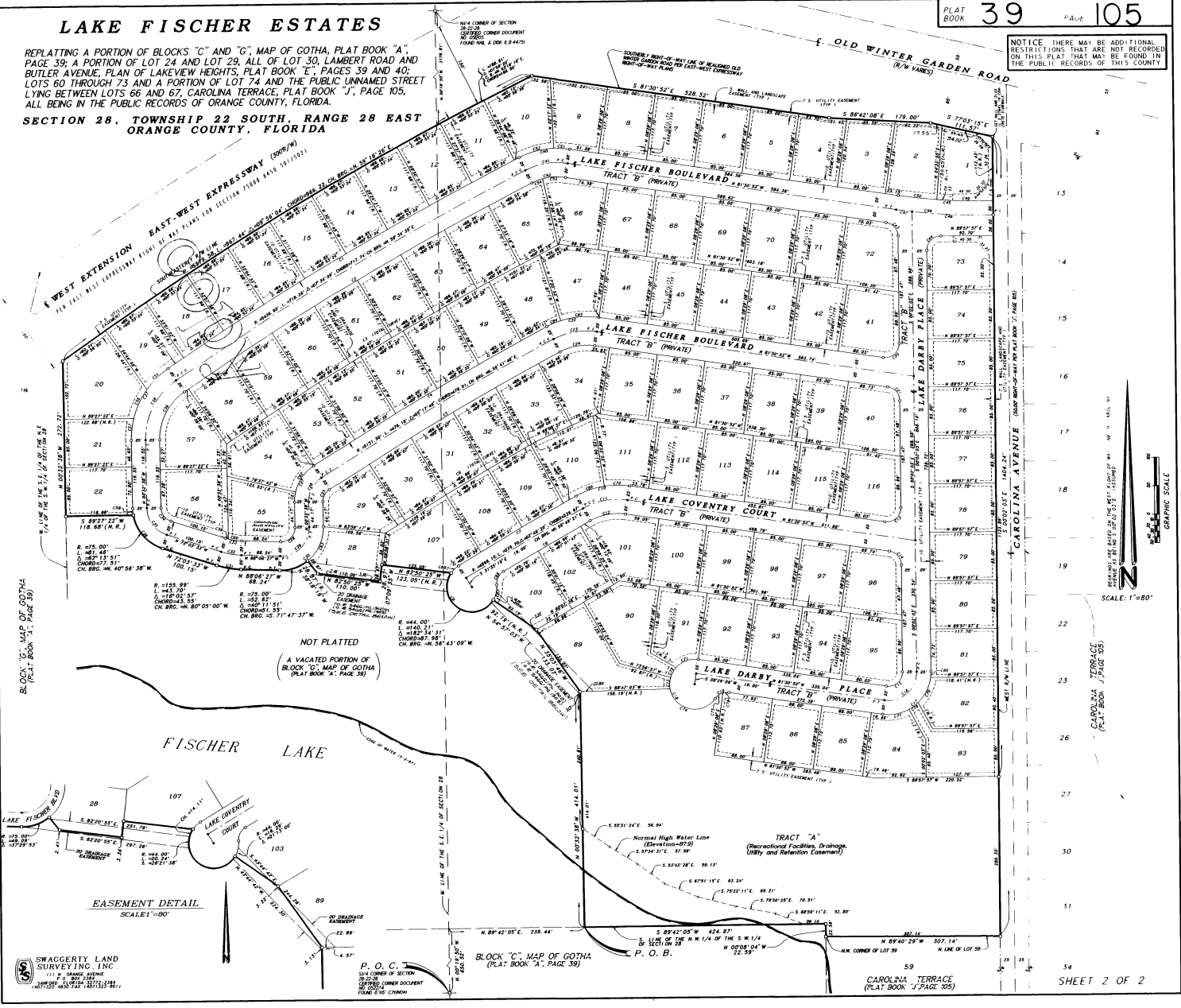


LAKE FISCHER ESTATES

REPLACING A PORTION OF BLOCKS "C" AND "G", MAP OF GOtha, PLAT BOOK "A", PAGE 39; A PORTION OF LOT 24 AND LOT 29, ALL OF LOT 30, LAMBERT ROAD AND BUTLER AVENUE, PLAN OF LAKEVIEW HEIGHTS, PLAT BOOK "E", PAGES 39 AND 40; LOTS 60 THROUGH 73 AND A PORTION OF LOT 74 AND THE PUBLIC UNNAMED STREET LYING BETWEEN LOTS 66 AND 67, CAROLINA TERRACE, PLAT BOOK "J", PAGE 105, ALL BEING IN THE PUBLIC RECORDS OF ORANGE COUNTY, FLORIDA.

**SECTION 28, TOWNSHIP 22 SOUTH, RANGE 28 EAST
ORANGE COUNTY, FLORIDA**

NOTICE: THERE MAY BE ADDITIONAL RESTRICTIONS THAT ARE NOT RECORDED ON THIS PLAT THAT MAY BE FOUND IN THE PUBLIC RECORDS OF THIS COUNTY



NOT PLATTED
(A VACATED PORTION OF
BLOCK "C", MAP OF GOtha
(PLAT BOOK "A", PAGE 39))

FISCHER LAKE

TRACT "A"
(Incorporated Facilities, Drains,
Utility and Retention Easement)

EASEMENT DETAIL
SCALE 1"=80'

SWAGGERTY LAND SURVEYING, INC.
1111 S. ORANGE AVENUE
ORANGE, FLORIDA 32811
PH: 407-847-1111 FAX: 407-847-1111

P. O. C.
1/4 CORNER OF SECTION
28, TOWNSHIP 22 SOUTH,
RANGE 28 EAST,
ORANGE COUNTY,
FLORIDA 32811

BLOCK "C", MAP OF GOtha
(PLAT BOOK "A", PAGE 39)

CAROLINA TERRACE
(PLAT BOOK "J", PAGE 105)

SHEET 2 OF 2

